

Installation Instructions

These are your installation instructions to deactivate VR33 OpenTherm interface module in your boiler. This is necessary to do in order for tado° to control your boiler using Vaillant EBUS interface.



If VR33 module is not deactivated, tado° cannot control your boiler using the modulating Vaillant eBus interface.

1. Switching off your boiler and corresponding circuit breaker

Make sure that you take steps to ensure that the power supply to your boiler is completely switched off and remains switched off during the installation process. In addition it is compulsory to remove the breaker/fuse that your boiler is connected to, or turn of the corresponding switch in your circuit breaker box.

Please leave a message at the circuit breaker box such to inform everyone not to turn anything back on.



If you are not 100% sure which is the correct switch/breaker/fuse then you must remove all breakers/fuses or turn off the main power switch in your circuit breaker box.



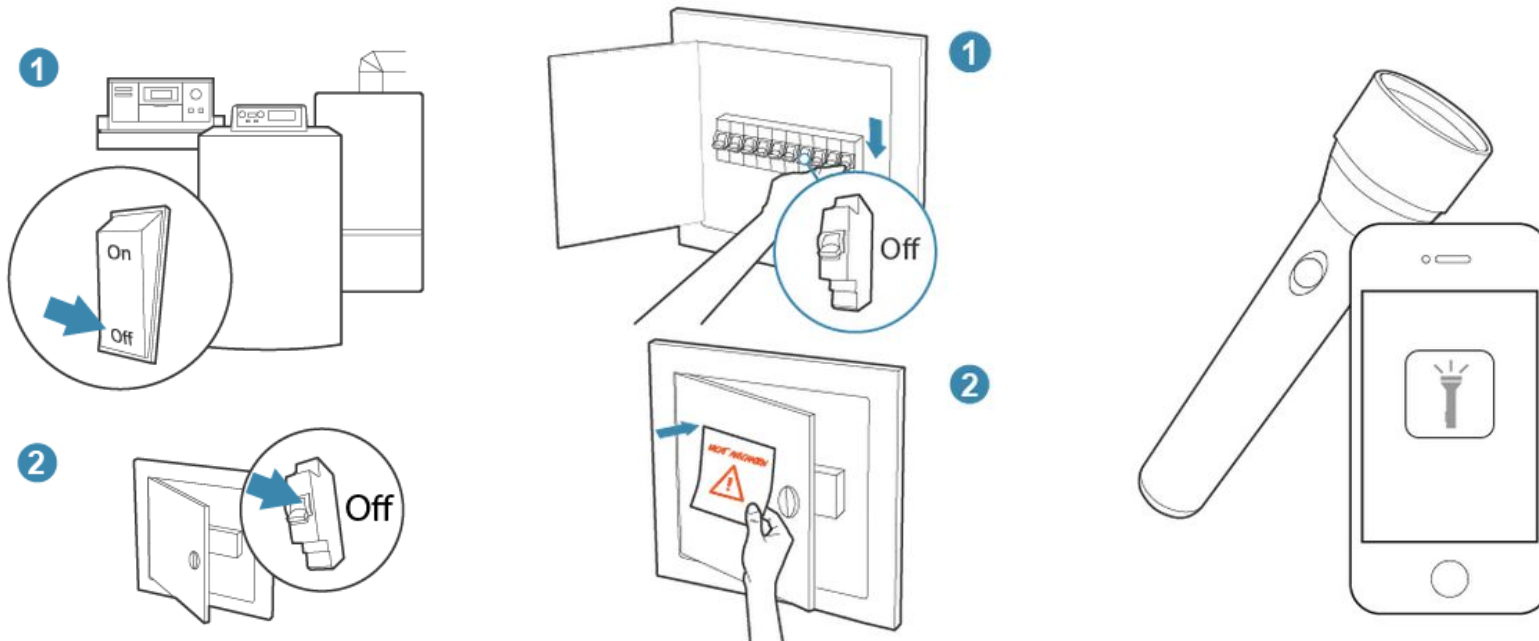
Please make sure that all residents of the home are aware that you are going to turn off and that you are the only one who is allowed to switch it on again.



Please be aware that your desktop computer and lighting will turn off when you switch off the mains power circuit breaker switch.

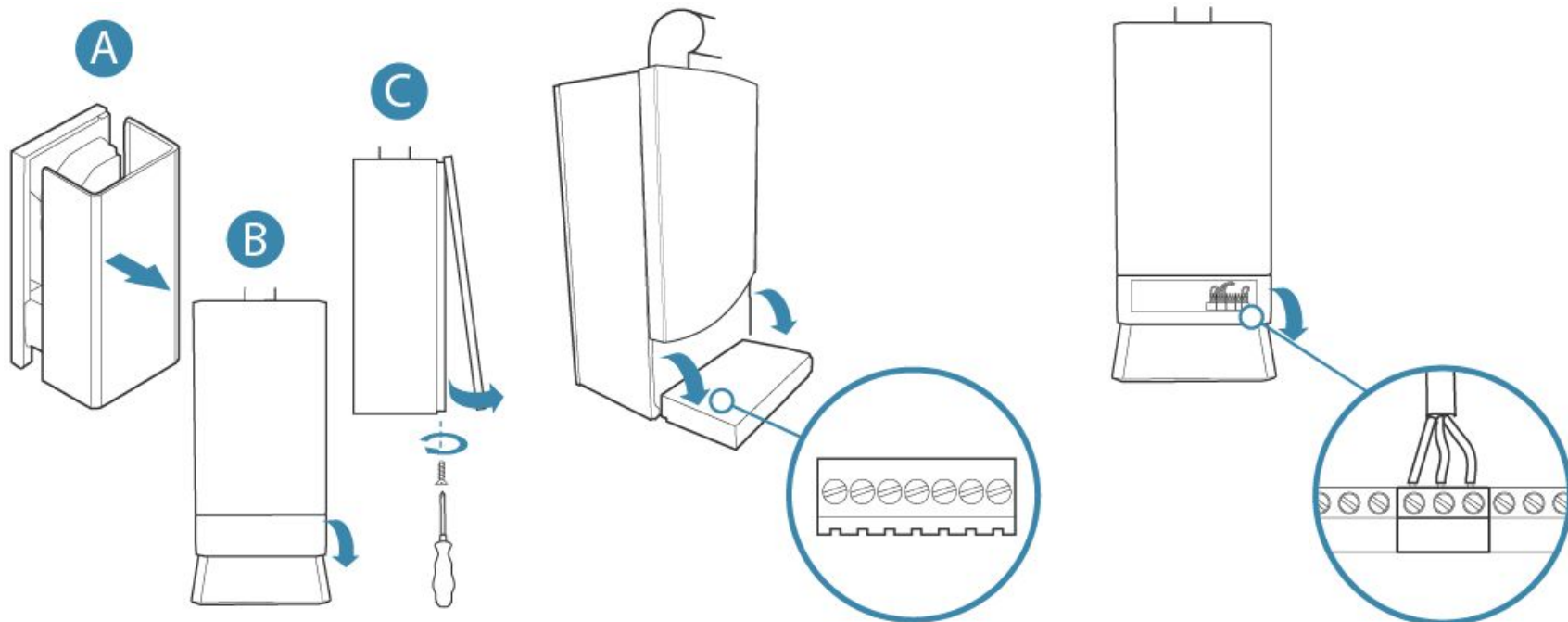


To provide safe lighting for the installation you can use the flashlight function of your smartphone or a torch.



2. Open your boiler to get access to its control unit

Access the boiler control by opening the boiler. Since every boiler has a different opening method, take a look at our examples below to get an idea how your boiler can be opened. All wiring connection terminals are found on the control unit. You will be looking for the place where lots of wires connect to the boiler. Look for the terminal where a room thermostat can be connected. The installation manual of your boiler very often helps.

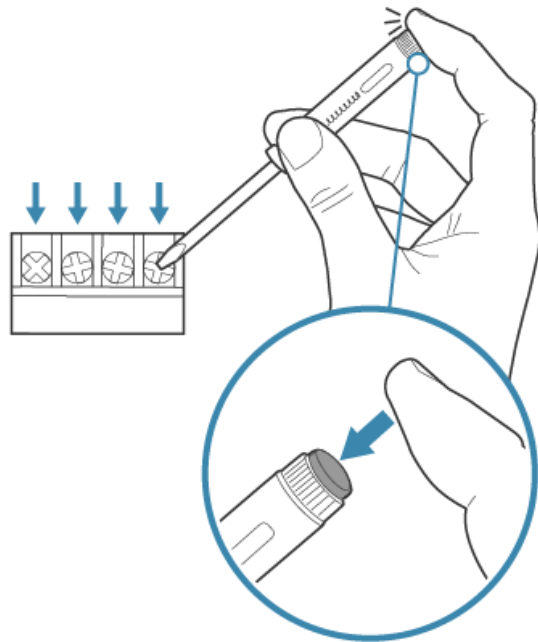


3. Make sure the power is off

Use the voltage tester to check if there is still power on any wiring terminal.

If there is any light it means that there is still power on the wiring. Before continuing, switch off the circuit breaker.

If there is no light, power is off and it is safe to proceed.



WARNING:
POWER STILL ON



4. Documenting the wiring of the existing setup

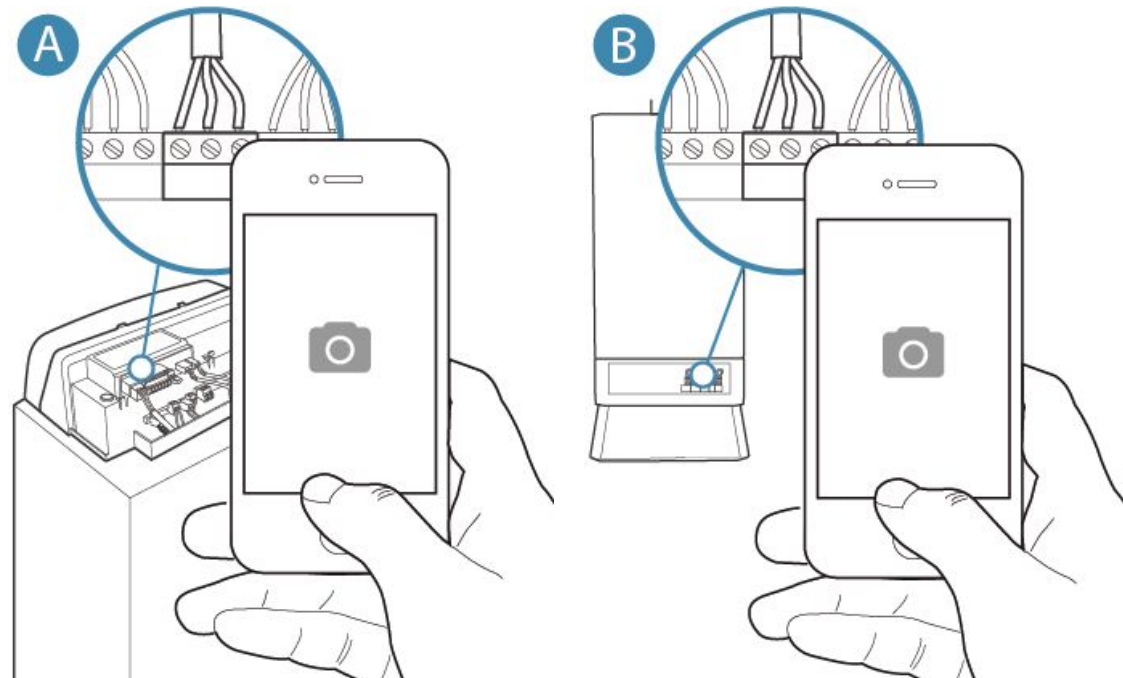
As soon as you have removed the cover please take detailed photos of the existing wiring with the cables still attached. Try your best to make the terminal numbering legible.



This step is very important, you will definitely need this information in the future. Should you need help, it will be difficult for our Technical Support Team to assist you without the photos of all of the current wiring.

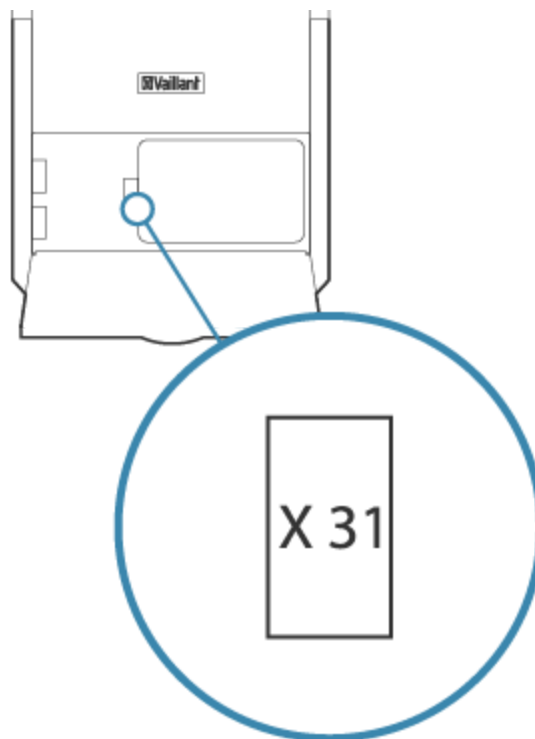


You will need these photos to restore your old system if you move house in order to take your tado° with you. Please save them in a place where you will find them again in this case.



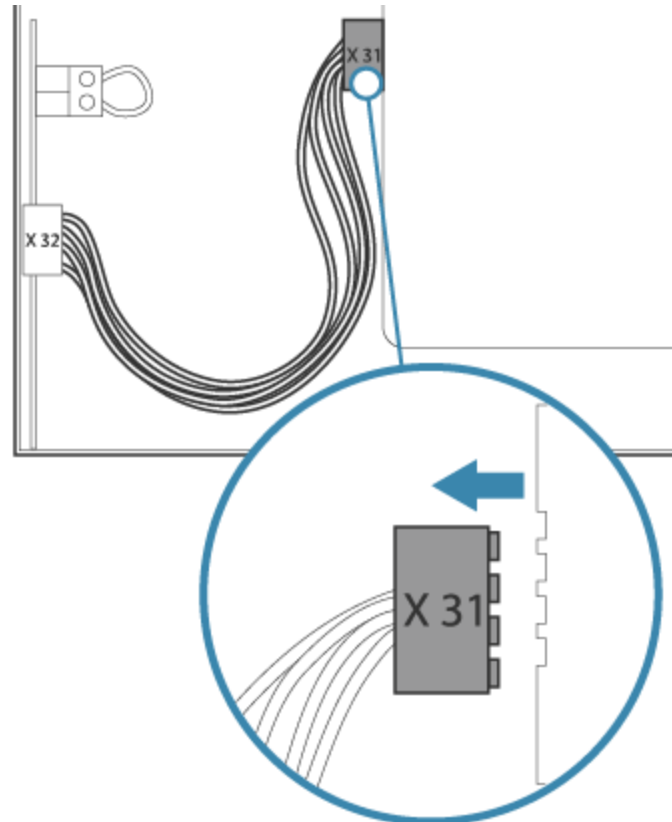
5. Identifying VR33 interface module

Take a look at the main board of your boiler. VR33 card is connected to the terminal block labeled with **X31** which is located in the far left part of the mainboard.



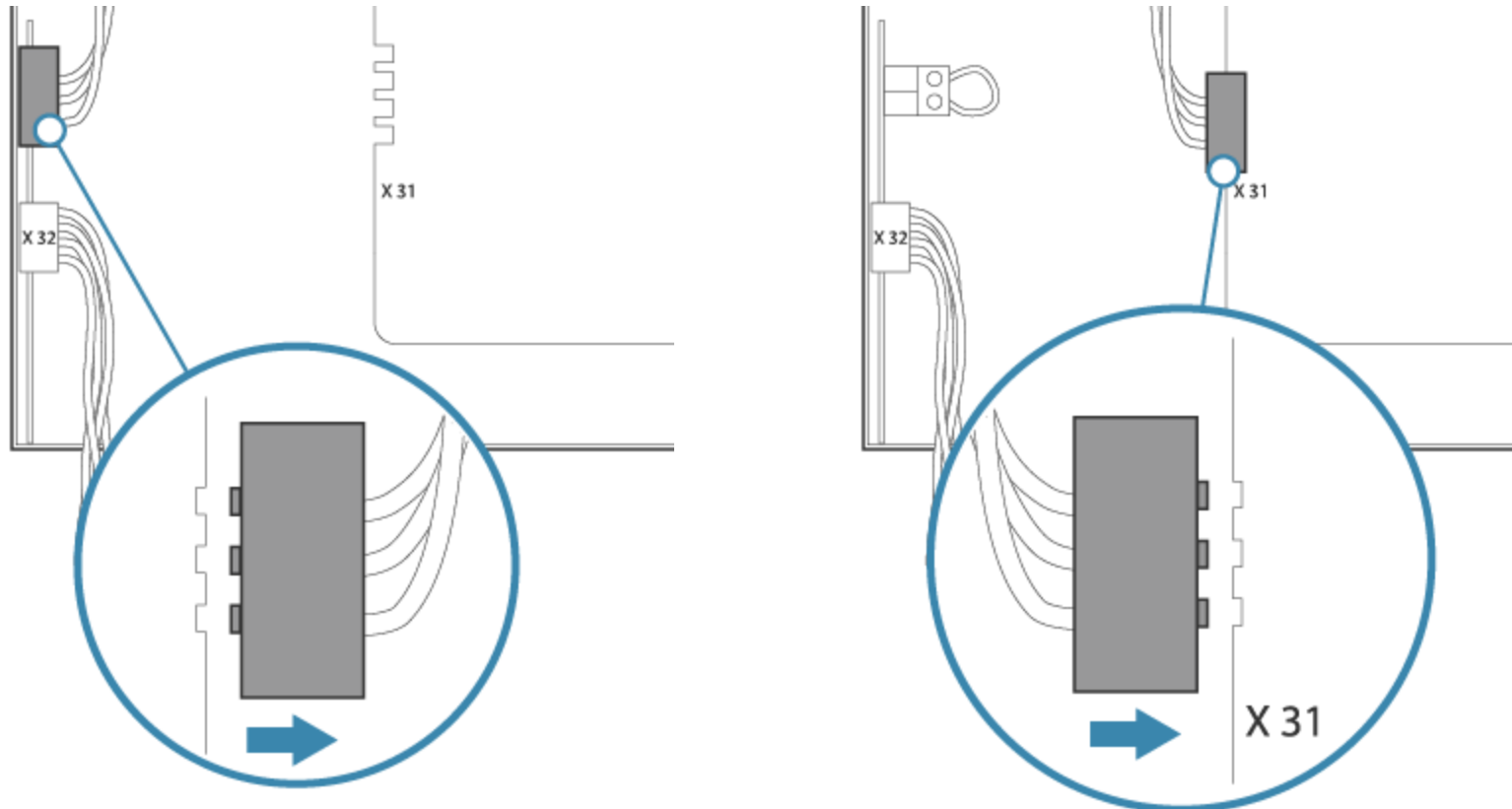
6. Disconnecting VR33 interface module

Make sure that the 4 wire cable harness is disconnected from the terminal block labeled with **X31** on the mainboard.



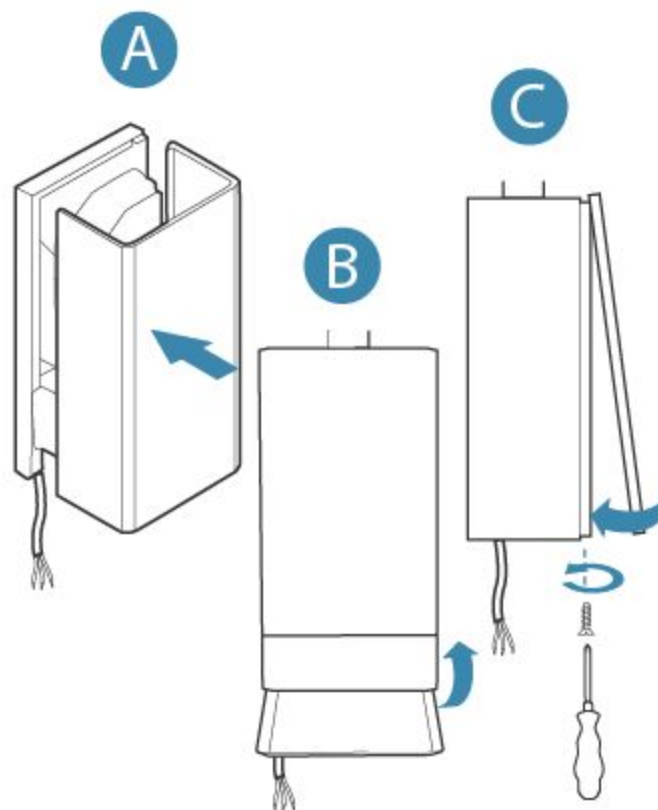
7. Rewiring the hot water storage plug (if present)

If there is a hot water storage plug connected to the VR 33 module, this must be rewired. To do so, first unplug it from the VR 33 card... and then connect it to the X31 connector of the main board instead.



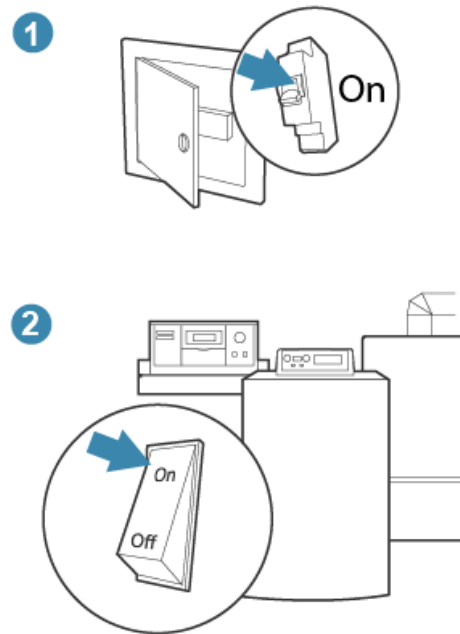
8. Closing the boiler

Carefully close the boiler and its control panel by reversing the sequence in which you opened it.



9. Switching the boiler and circuit breaker switch back on

You can now turn the power back on. Please reverse the steps that you took to turn the power to the boiler off.



You have now successfully completed the deactivation of VR33 opentherm interface module in your boiler.